



RESIDENCE  
PUŠKINOVA

## APARTMENT S2

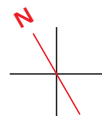
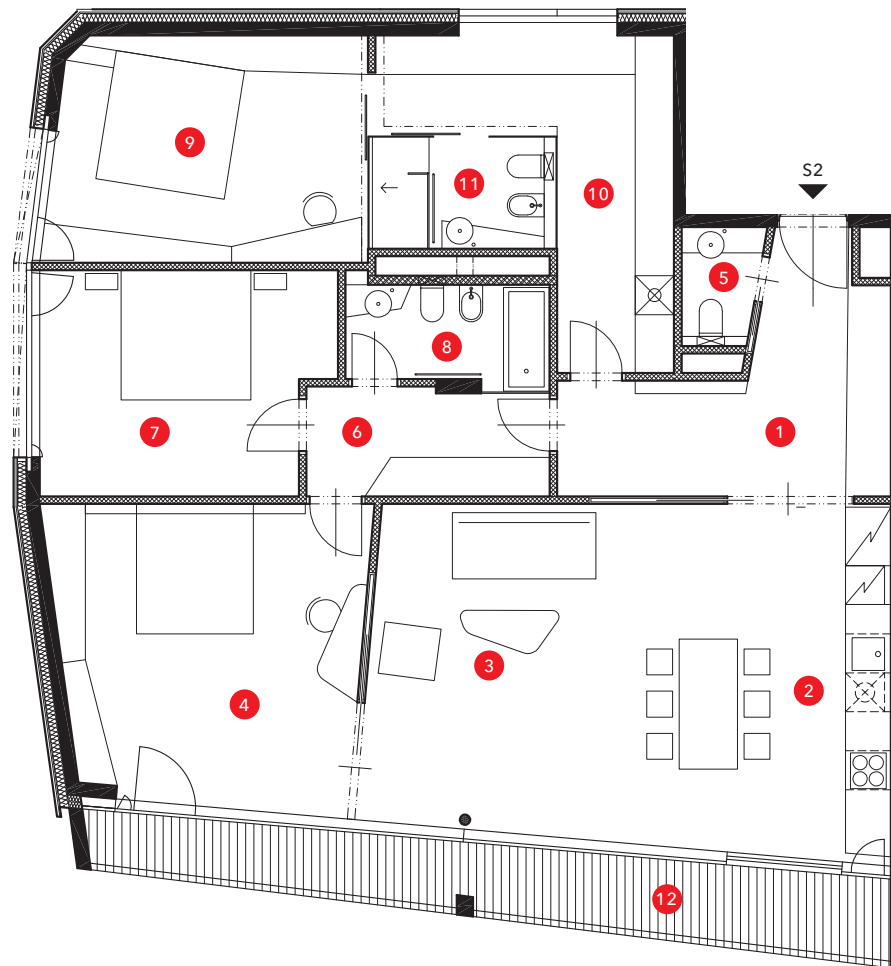
2<sup>nd</sup> floor

|    |             |                      |
|----|-------------|----------------------|
| 1  | lobby       | 13.25 m <sup>2</sup> |
| 2  | kitchen     | 12.89 m <sup>2</sup> |
| 3  | living room | 28.62 m <sup>2</sup> |
| 4  | study       | 21.24 m <sup>2</sup> |
| 5  | toilet      | 1.98 m <sup>2</sup>  |
| 6  | corridor    | 6.11 m <sup>2</sup>  |
| 7  | bedroom I   | 14.69 m <sup>2</sup> |
| 8  | bathroom I  | 4.3 m <sup>2</sup>   |
| 9  | bedroom II  | 16.61 m <sup>2</sup> |
| 10 | cloakroom   | 13.27 m <sup>2</sup> |
| 11 | bathroom II | 5 m <sup>2</sup>     |

|                 |                       |
|-----------------|-----------------------|
| Total apartment | 137.96 m <sup>2</sup> |
| 12 terrace      | 14.1 m <sup>2</sup>   |

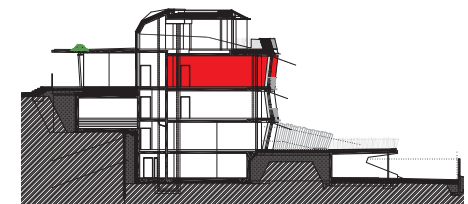
|       |                       |
|-------|-----------------------|
| Total | 152.06 m <sup>2</sup> |
|-------|-----------------------|

|    |                           |                            |
|----|---------------------------|----------------------------|
| 13 | storage<br>parking places | 16 m <sup>2</sup><br>2 pcs |
|----|---------------------------|----------------------------|

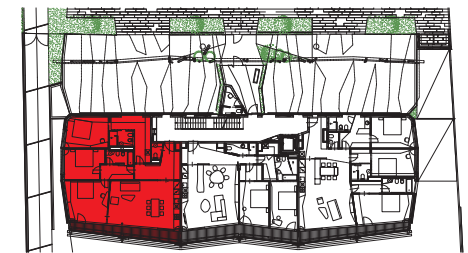


0 1 5 10 m

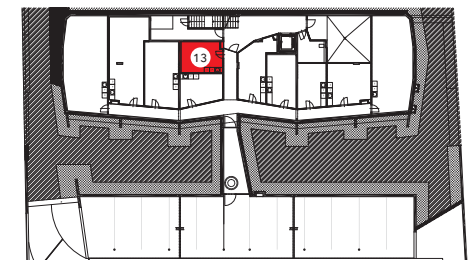
All stated floor areas are approximate and subject to normal construction variances and tolerances. Fit-out of the apartment shown on floor plan (such as furniture, kitchen including appliances, build in wardrobes, etc.) is for presentation purposes only, not included in the price of apartment.



cross section



2<sup>nd</sup> floor



basement storage



RESIDENCE  
PUŠKINOVA

## APARTMENT S3

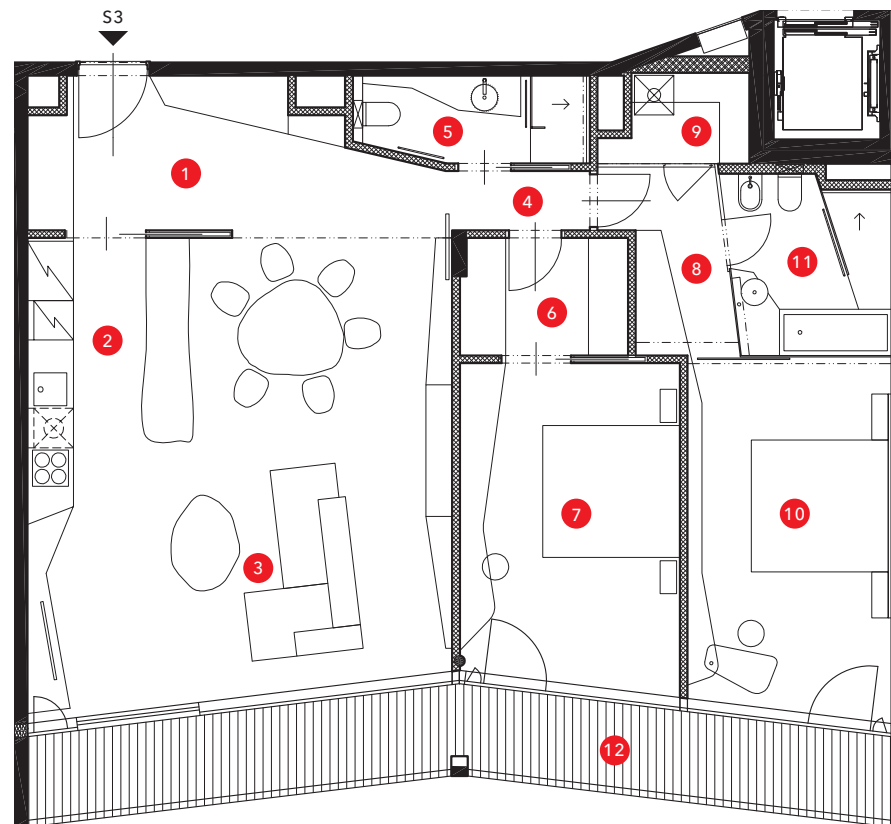
2<sup>nd</sup> floor

|    |              |                      |
|----|--------------|----------------------|
| 1  | lobby        | 10.25 m <sup>2</sup> |
| 2  | kitchen      | 7.08 m <sup>2</sup>  |
| 3  | living room  | 39.52 m <sup>2</sup> |
| 4  | corridor     | 1.79 m <sup>2</sup>  |
| 5  | bathroom I   | 4.43 m <sup>2</sup>  |
| 6  | cloakroom I  | 4.37 m <sup>2</sup>  |
| 7  | bedroom I    | 16.02 m <sup>2</sup> |
| 8  | cloakroom II | 4.61 m <sup>2</sup>  |
| 9  | pantry       | 2.38 m <sup>2</sup>  |
| 10 | bedroom II   | 16.42 m <sup>2</sup> |
| 11 | bathroom II  | 6.51 m <sup>2</sup>  |

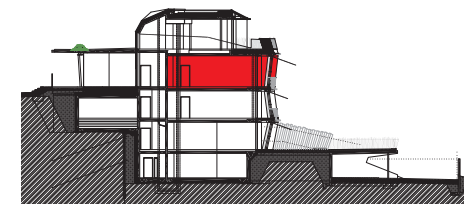
|                 |                       |
|-----------------|-----------------------|
| Total apartment | 113.38 m <sup>2</sup> |
| 12 terrace      | 17.99 m <sup>2</sup>  |

Total 131.37 m<sup>2</sup>

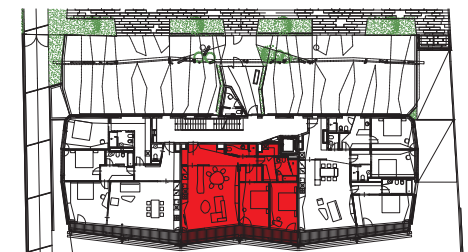
|    |                           |                            |
|----|---------------------------|----------------------------|
| 13 | storage<br>parking places | 22 m <sup>2</sup><br>1 pcs |
|----|---------------------------|----------------------------|



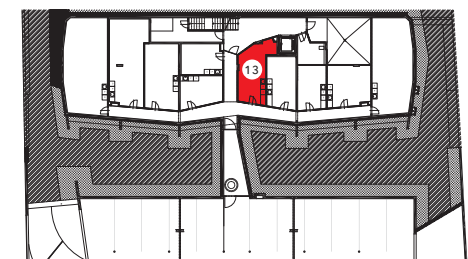
All stated floor areas are approximate and subject to normal construction variances and tolerances. Fit-out of the apartment shown on floor plan (such as furniture, kitchen including appliances, build in wardrobes, etc.) is for presentation purposes only, not included in the price of apartment.



cross section



2<sup>nd</sup> floor



basement storage



RESIDENCE  
PUŠKINOVA

## APARTMENT S4

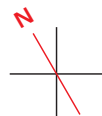
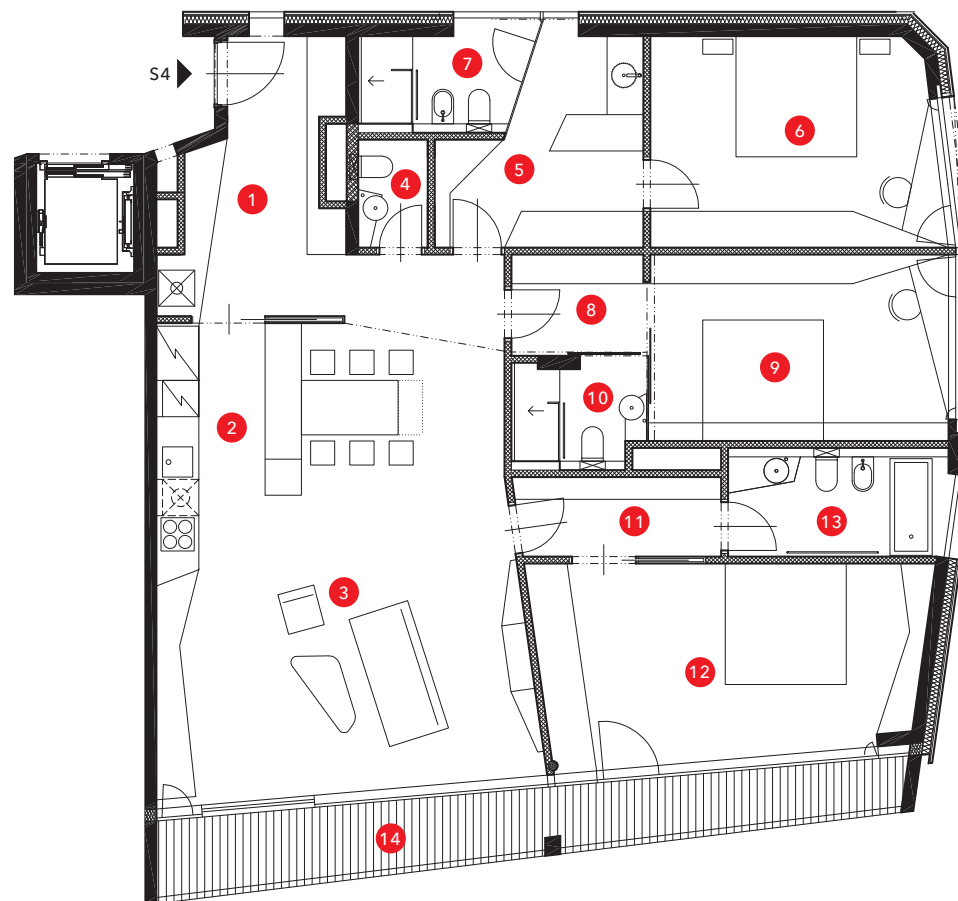
2<sup>nd</sup> floor

|    |               |                      |
|----|---------------|----------------------|
| 1  | lobby         | 10.67 m <sup>2</sup> |
| 2  | kitchen       | 6.77 m <sup>2</sup>  |
| 3  | living room   | 42.33 m <sup>2</sup> |
| 4  | toilet        | 1.97 m <sup>2</sup>  |
| 5  | cloakroom I   | 9.3 m <sup>2</sup>   |
| 6  | bedroom I     | 16.19 m <sup>2</sup> |
| 7  | bathroom I    | 4 m <sup>2</sup>     |
| 8  | cloakroom II  | 3.66 m <sup>2</sup>  |
| 9  | bedroom II    | 15 m <sup>2</sup>    |
| 10 | bathroom II   | 3.42 m <sup>2</sup>  |
| 11 | cloakroom III | 4.3 m <sup>2</sup>   |
| 12 | bedroom III   | 19.19 m <sup>2</sup> |
| 13 | bathroom III  | 6.28 m <sup>2</sup>  |

|                 |                       |
|-----------------|-----------------------|
| Total apartment | 143.08 m <sup>2</sup> |
| 14 terrace      | 14.1 m <sup>2</sup>   |

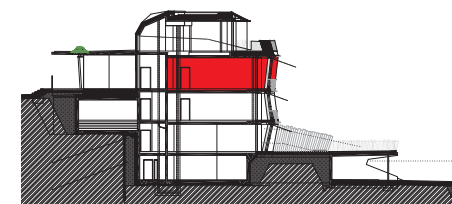
|       |                       |
|-------|-----------------------|
| Total | 157.18 m <sup>2</sup> |
|-------|-----------------------|

|    |                           |                            |
|----|---------------------------|----------------------------|
| 15 | storage<br>parking places | 22 m <sup>2</sup><br>2 pcs |
|----|---------------------------|----------------------------|

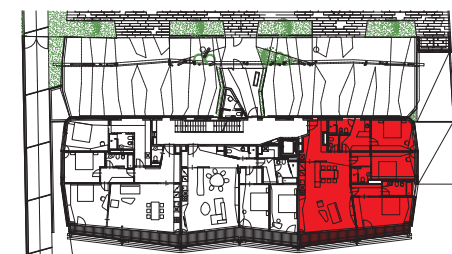


0 1 5 10 m

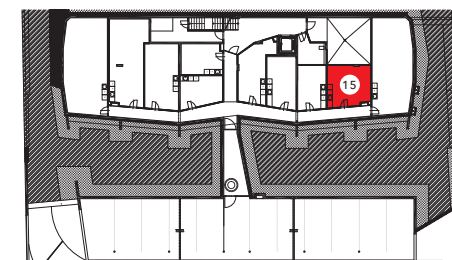
All stated floor areas are approximate and subject to normal construction variances and tolerances. Fit-out of the apartment shown on floor plan (such as furniture, kitchen including appliances, build in wardrobes, etc.) is for presentation purposes only, not included in the price of apartment.



cross section



2<sup>nd</sup> floor



basement storage



RESIDENCE  
PUŠKINOVA

## APARTMENT S5

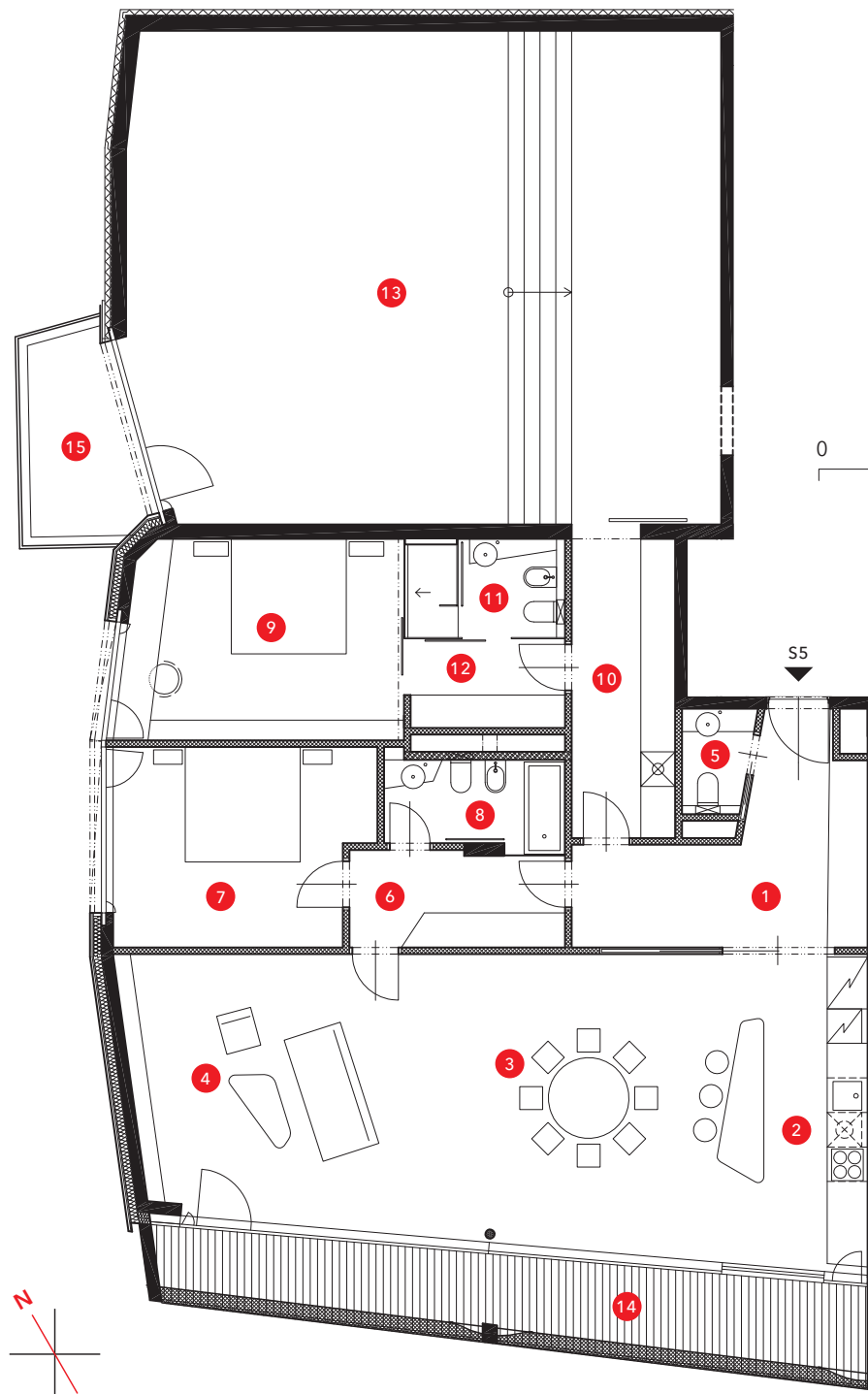
1<sup>st</sup> floor

|    |              |                      |
|----|--------------|----------------------|
| 1  | lobby        | 13.25 m <sup>2</sup> |
| 2  | kitchen      | 12.89 m <sup>2</sup> |
| 3  | dining room  | 28.7 m <sup>2</sup>  |
| 4  | living room  | 21.24 m <sup>2</sup> |
| 5  | toilet       | 1.98 m <sup>2</sup>  |
| 6  | corridor     | 6.11 m <sup>2</sup>  |
| 7  | bedroom I    | 14.69 m <sup>2</sup> |
| 8  | bathroom I   | 4.4 m <sup>2</sup>   |
| 9  | bedroom II   | 16.61 m <sup>2</sup> |
| 10 | cloakroom I  | 9.44 m <sup>2</sup>  |
| 11 | bathroom II  | 4.79 m <sup>2</sup>  |
| 12 | cloakroom II | 4.01 m <sup>2</sup>  |
| 13 | fitness      | 86.45 m <sup>2</sup> |

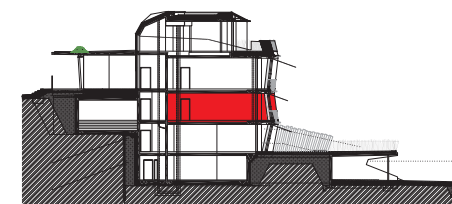
|                 |                       |
|-----------------|-----------------------|
| Total apartment | 224.56 m <sup>2</sup> |
| 14 terrace      | 18.95 m <sup>2</sup>  |

Total 243.51 m<sup>2</sup>

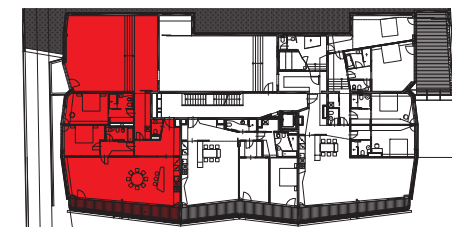
|    |                   |                   |
|----|-------------------|-------------------|
| 15 | lowered courtyard | 5 m <sup>2</sup>  |
| 16 | storage           | 53 m <sup>2</sup> |
|    | parking places    | 3 pcs             |



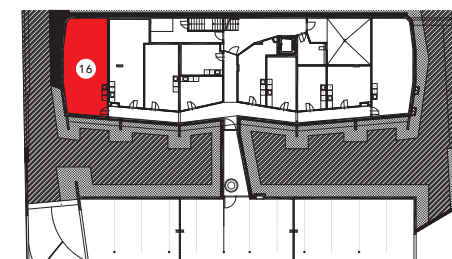
0 1 5 10 m



cross section



1<sup>st</sup> floor



basement storage

All stated floor areas are approximate and subject to normal construction variances and tolerances. Fit-out of the apartment shown on floor plan (such as furniture, kitchen including appliances, build in wardrobes, etc.) is for presentation purposes only, not included in the price of apartment.



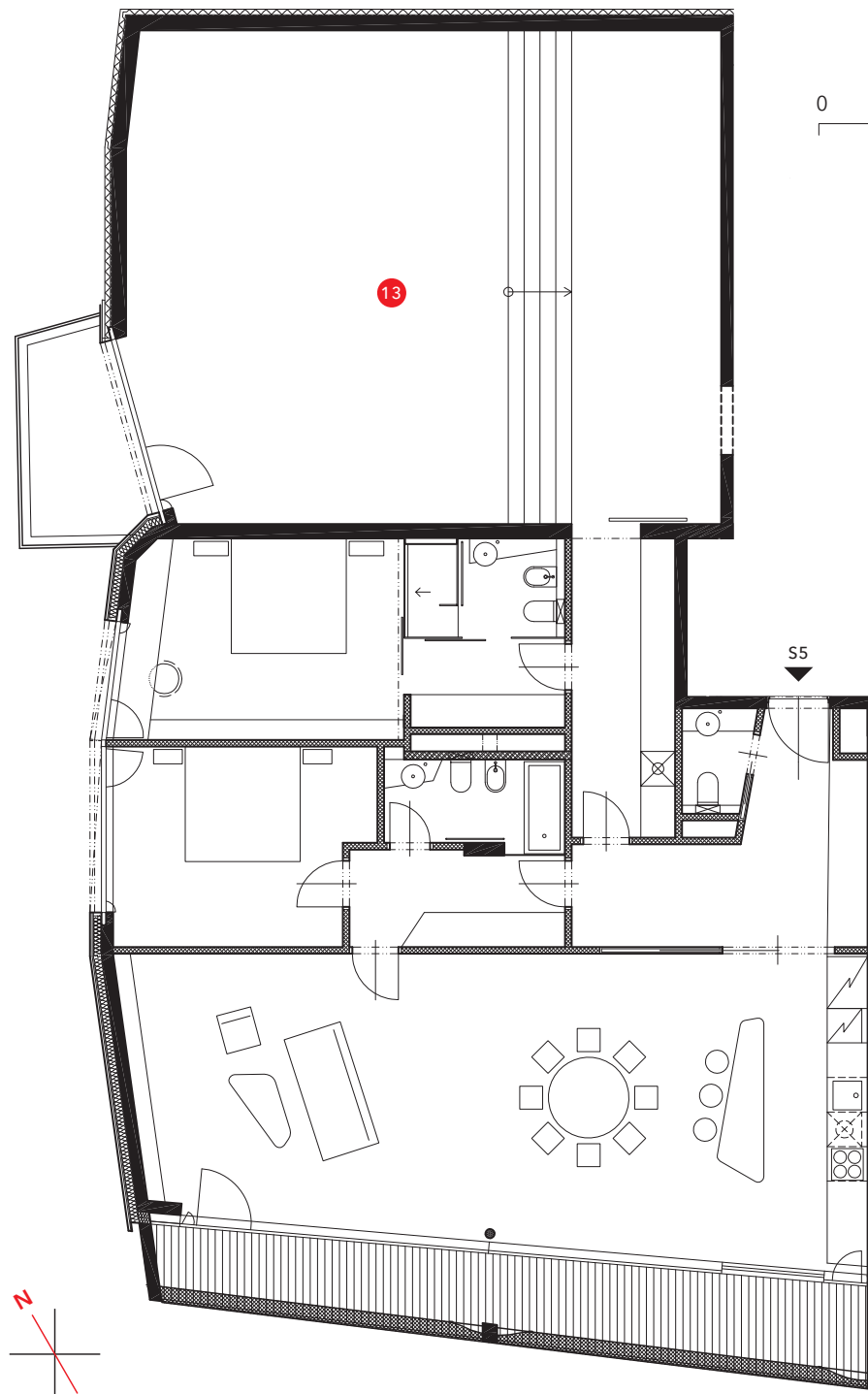
RESIDENCE  
PUŠKINOVA

## APARTMENT S5

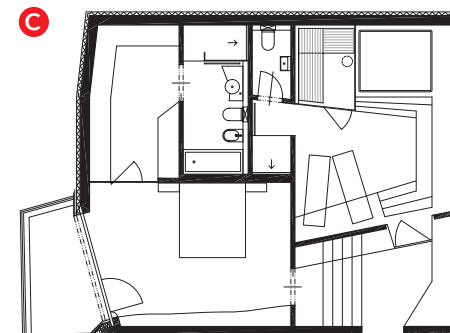
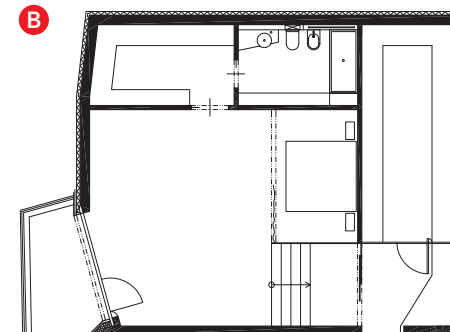
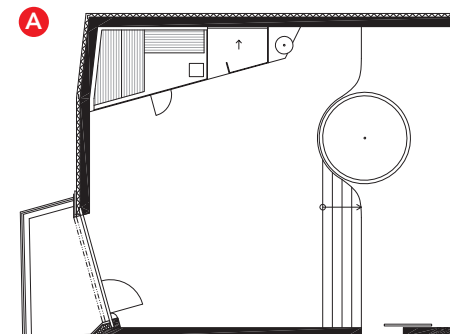
1<sup>st</sup> floor

13 fitness options

A B C



0 1 5 10 m





RESIDENCE  
PUŠKINOVA

## APARTMENT S6

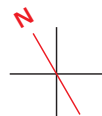
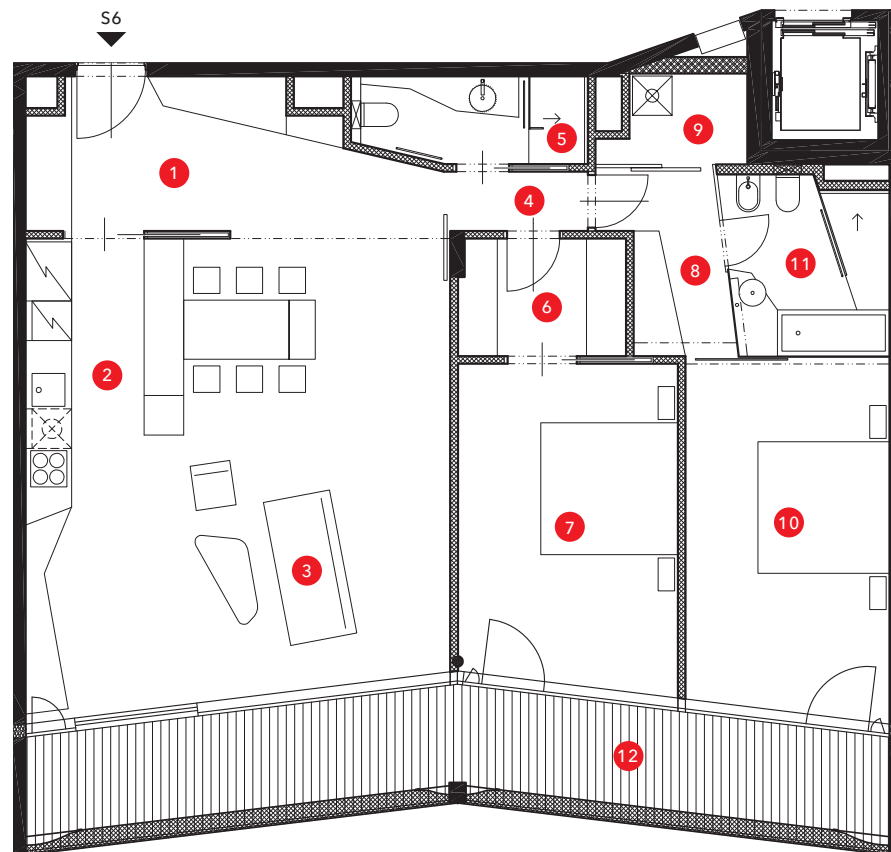
1<sup>st</sup> floor

|    |              |                      |
|----|--------------|----------------------|
| 1  | lobby        | 12.05 m <sup>2</sup> |
| 2  | kitchen      | 7.08 m <sup>2</sup>  |
| 3  | living room  | 37.68 m <sup>2</sup> |
| 4  | corridor     | 1.79 m <sup>2</sup>  |
| 5  | bathroom I   | 4.42 m <sup>2</sup>  |
| 6  | cloakroom I  | 4.37 m <sup>2</sup>  |
| 7  | bedroom I    | 16.02 m <sup>2</sup> |
| 8  | cloakroom II | 4.61 m <sup>2</sup>  |
| 9  | pantry       | 2.38 m <sup>2</sup>  |
| 10 | bedroom II   | 16.42 m <sup>2</sup> |
| 11 | bathroom II  | 6.51 m <sup>2</sup>  |

|                 |                       |
|-----------------|-----------------------|
| Total apartment | 113.33 m <sup>2</sup> |
| 12 terrace      | 23.17 m <sup>2</sup>  |

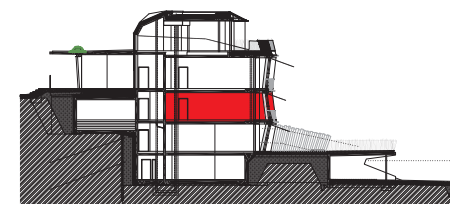
|       |                      |
|-------|----------------------|
| Total | 136.5 m <sup>2</sup> |
|-------|----------------------|

|    |                           |                            |
|----|---------------------------|----------------------------|
| 13 | storage<br>parking places | 20 m <sup>2</sup><br>1 pcs |
|----|---------------------------|----------------------------|

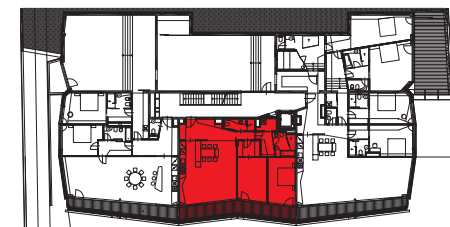


0 1 5 10 m

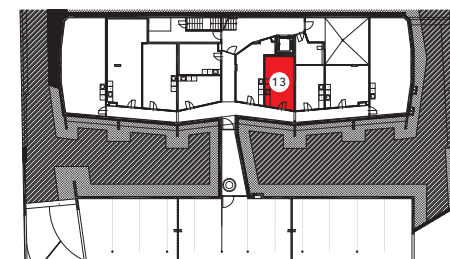
All stated floor areas are approximate and subject to normal construction variances and tolerances. Fit-out of the apartment shown on floor plan (such as furniture, kitchen including appliances, build in wardrobes, etc.) is for presentation purposes only, not included in the price of apartment.



cross section



1<sup>st</sup> floor



basement storage





RESIDENCE  
PUŠKINOVA

## APARTMENT S7

1<sup>st</sup> floor

|    |                    |                      |
|----|--------------------|----------------------|
| 1  | lobby / cloakroom  | 23.3 m <sup>2</sup>  |
| 2  | kitchen            | 6.77 m <sup>2</sup>  |
| 3  | living room        | 73.21 m <sup>2</sup> |
| 4  | toilet             | 1.97 m <sup>2</sup>  |
| 5  | cloakroom I        | 3.81 m <sup>2</sup>  |
| 6  | bedroom I          | 16.14 m <sup>2</sup> |
| 7  | bathroom I         | 3.5 m <sup>2</sup>   |
| 8  | cloakroom II       | 3.66 m <sup>2</sup>  |
| 9  | bedroom II         | 16.7 m <sup>2</sup>  |
| 10 | bathroom II        | 3.75 m <sup>2</sup>  |
| 11 | corridor           | 4.13 m <sup>2</sup>  |
| 12 | pantry             | 1.86 m <sup>2</sup>  |
| 13 | corridor           | 8.88 m <sup>2</sup>  |
| 14 | corridor           | 3 m <sup>2</sup>     |
| 15 | bathroom III       | 5.63 m <sup>2</sup>  |
| 16 | toilet             | 2.33 m <sup>2</sup>  |
| 17 | bedroom III        | 25.76 m <sup>2</sup> |
| 18 | study / guest room | 25.83 m <sup>2</sup> |
| 19 | fitness            | 21.03 m <sup>2</sup> |

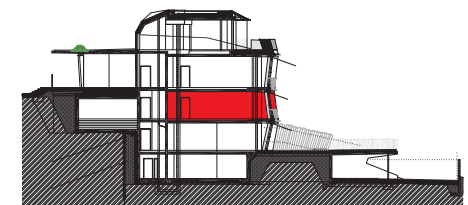
|                 |                       |
|-----------------|-----------------------|
| Total apartment | 251.26 m <sup>2</sup> |
| 20 terrace I    | 18.95 m <sup>2</sup>  |

|       |                       |
|-------|-----------------------|
| Total | 270.21 m <sup>2</sup> |
|-------|-----------------------|

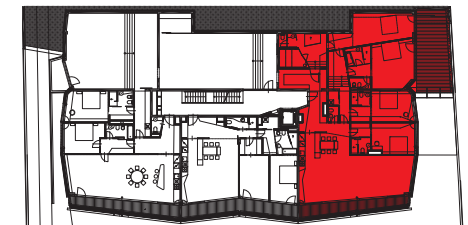
|                |                      |
|----------------|----------------------|
| 21 terrace II  | 30.21 m <sup>2</sup> |
| 22 storage     | 49 m <sup>2</sup>    |
| parking places | 3 pcs                |



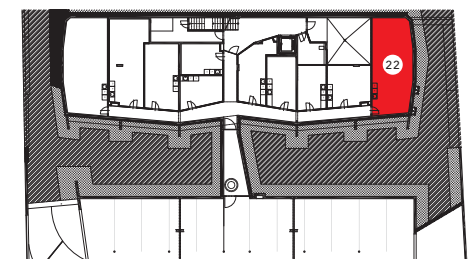
All stated floor areas are approximate and subject to normal construction variances and tolerances. Fit-out of the apartment shown on floor plan (such as furniture, kitchen including appliances, build in wardrobes, etc.) is for presentation purposes only, not included in the price of apartment.



cross section



1<sup>st</sup> floor



basement storage



RESIDENCE  
PUŠKINOVA

## APARTMENT S8

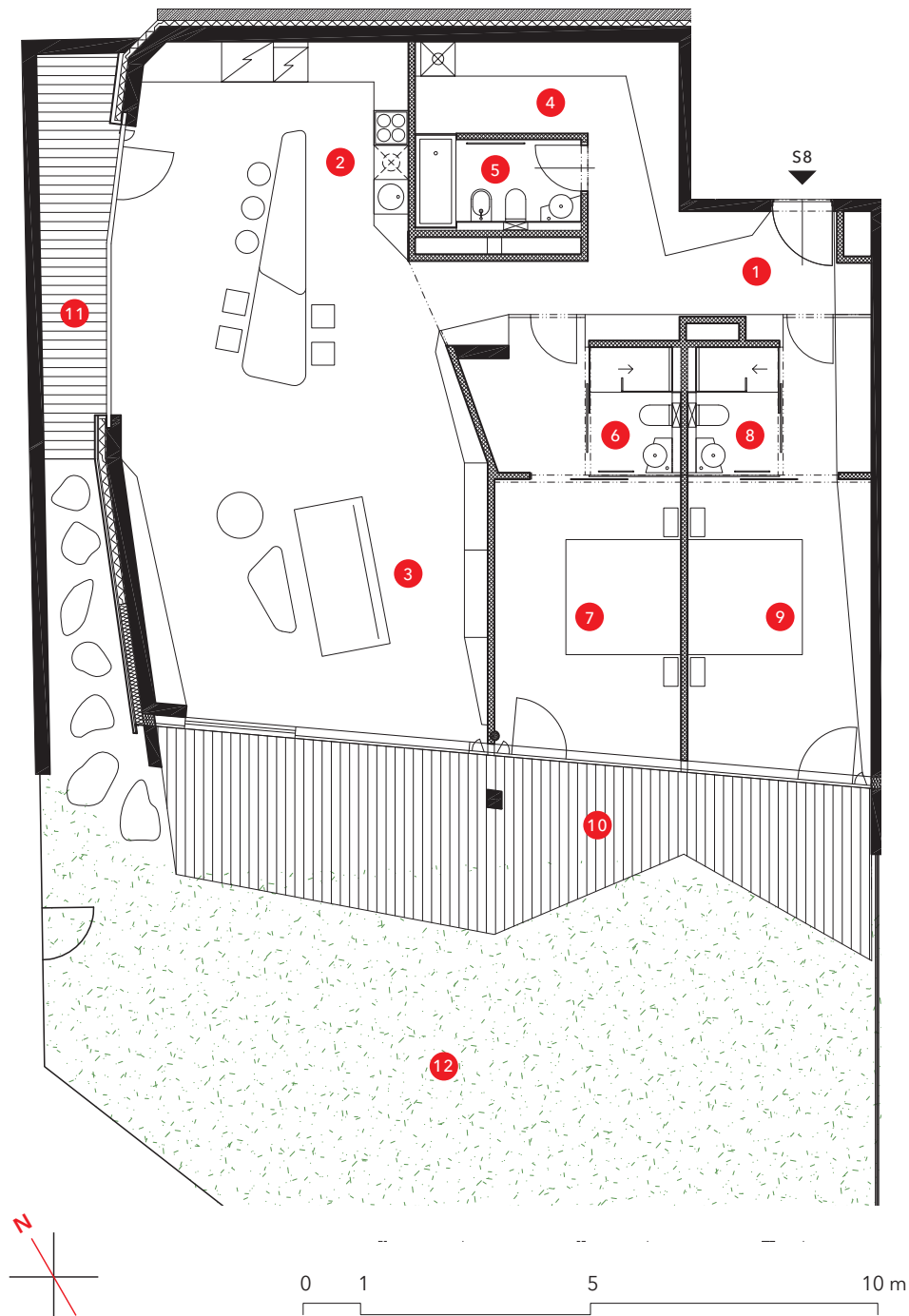
ground floor

|   |              |                      |
|---|--------------|----------------------|
| 1 | lobby        | 12.53 m <sup>2</sup> |
| 2 | kitchen      | 8.29 m <sup>2</sup>  |
| 3 | living room  | 58.55 m <sup>2</sup> |
| 4 | cloakroom    | 9.29 m <sup>2</sup>  |
| 5 | bathroom I   | 3.93 m <sup>2</sup>  |
| 6 | bathroom II  | 3.28 m <sup>2</sup>  |
| 7 | bedroom I    | 19.58 m <sup>2</sup> |
| 8 | bathroom III | 3.28 m <sup>2</sup>  |
| 9 | bedroom II   | 20.07 m <sup>2</sup> |

|                 |                       |
|-----------------|-----------------------|
| Total apartment | 138.80 m <sup>2</sup> |
| 10 terrace      | 26.93 m <sup>2</sup>  |

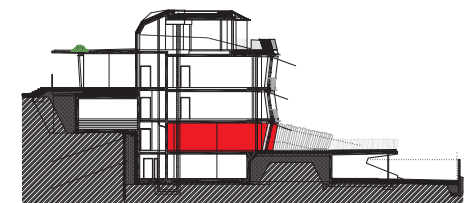
|       |                       |
|-------|-----------------------|
| Total | 165.73 m <sup>2</sup> |
|-------|-----------------------|

|    |                   |                   |
|----|-------------------|-------------------|
| 11 | lowered courtyard | 8 m <sup>2</sup>  |
| 12 | green             | 84 m <sup>2</sup> |
| 13 | storage           | 28 m <sup>2</sup> |
|    | parking places    | 2 pcs             |

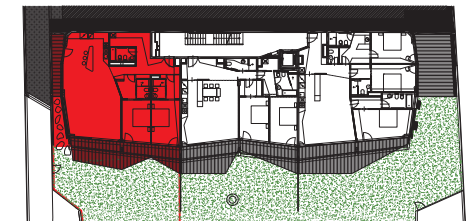


All stated floor areas are approximate and subject to normal construction variances and tolerances. Fit-out of the apartment shown on floor plan (such as furniture, kitchen including appliances, build in wardrobes, etc.) is for presentation purposes only, not included in the price of apartment.

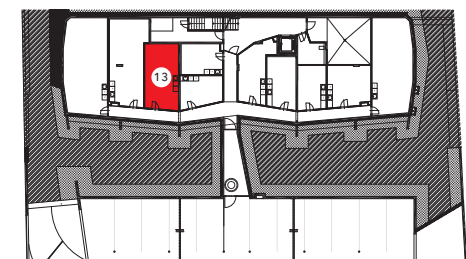
Green - the exclusive right of use to adjacent apartment owner.



cross section



ground floor



basement storage





RESIDENCE  
PUŠKINOVA

## APARTMENT S9

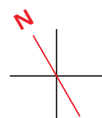
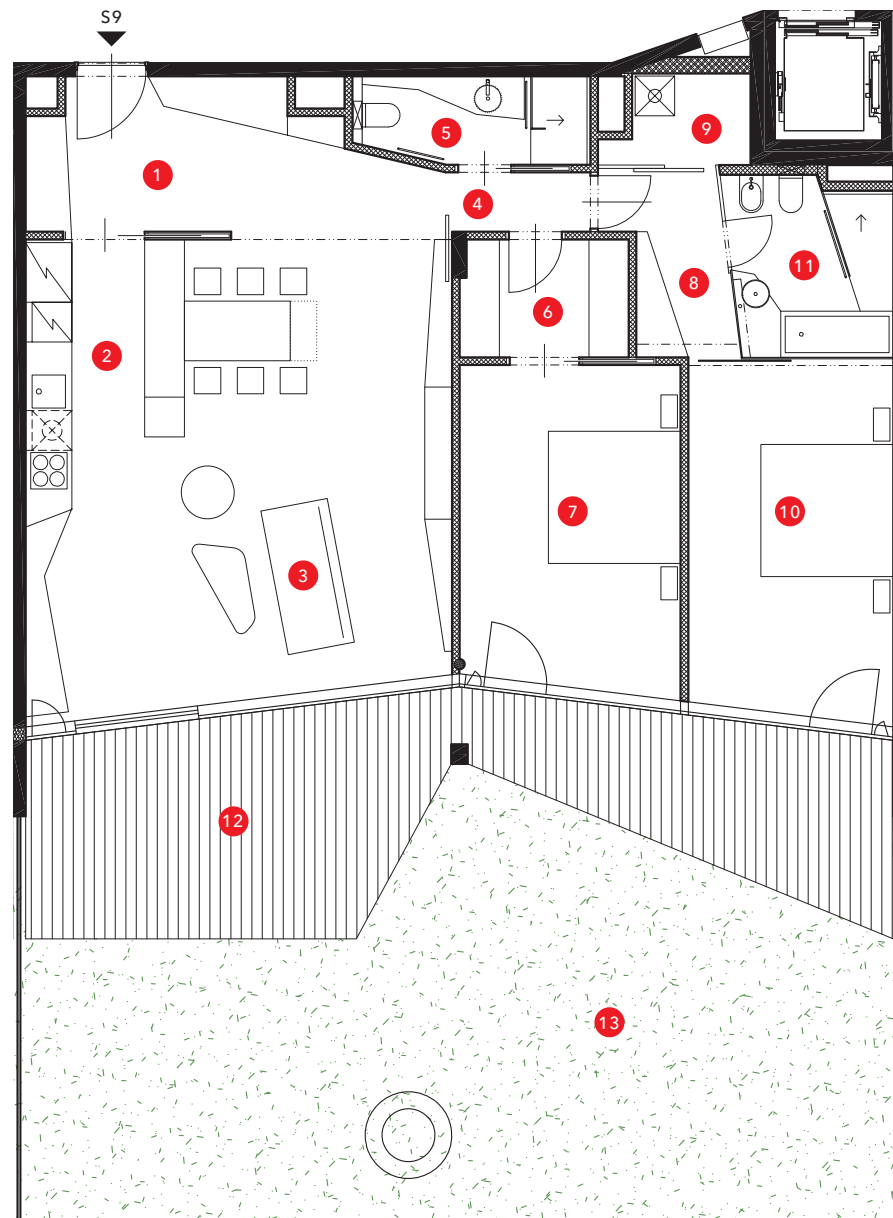
ground floor

|    |              |                      |
|----|--------------|----------------------|
| 1  | lobby        | 12.05 m <sup>2</sup> |
| 2  | kitchen      | 7.08 m <sup>2</sup>  |
| 3  | living room  | 37.72 m <sup>2</sup> |
| 4  | corridor     | 1.79 m <sup>2</sup>  |
| 5  | bathroom I   | 4.42 m <sup>2</sup>  |
| 6  | cloakroom I  | 4.37 m <sup>2</sup>  |
| 7  | bedroom I    | 16.02 m <sup>2</sup> |
| 8  | cloakroom II | 4.61 m <sup>2</sup>  |
| 9  | pantry       | 2.38 m <sup>2</sup>  |
| 10 | bedroom II   | 16.42 m <sup>2</sup> |
| 11 | bathroom II  | 6.51 m <sup>2</sup>  |

|                 |                       |
|-----------------|-----------------------|
| Total apartment | 113.37 m <sup>2</sup> |
| 12 terrace      | 48.41 m <sup>2</sup>  |

Total 161.78 m<sup>2</sup>

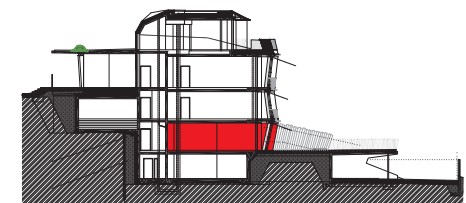
|    |                |                   |
|----|----------------|-------------------|
| 13 | green          | 68 m <sup>2</sup> |
| 14 | storage        | 16 m <sup>2</sup> |
|    | parking places | 1 pcs             |



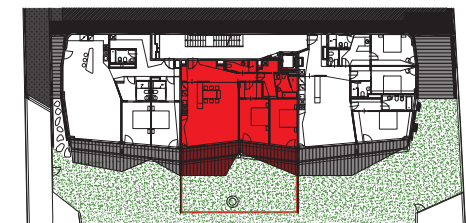
0 1 5 10 m

All stated floor areas are approximate and subject to normal construction variances and tolerances. Fit-out of the apartment shown on floor plan (such as furniture, kitchen including appliances, build in wardrobes, etc.) is for presentation purposes only, not included in the price of apartment.

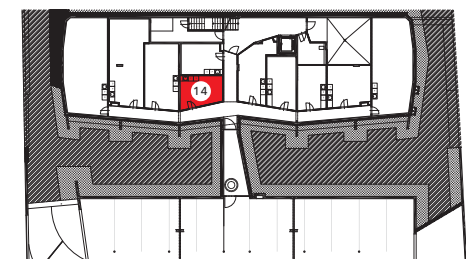
Green - the exclusive right of use to adjacent apartment owner.



cross section



ground floor



basement storage



RESIDENCE  
PUŠKINOVA

## APARTMENT S10

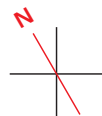
ground floor

|    |              |                      |
|----|--------------|----------------------|
| 1  | lobby        | 10.93 m <sup>2</sup> |
| 2  | kitchen      | 7.13 m <sup>2</sup>  |
| 3  | living room  | 41.97 m <sup>2</sup> |
| 4  | toilet       | 1.97 m <sup>2</sup>  |
| 5  | cloakroom I  | 9.75 m <sup>2</sup>  |
| 6  | bedroom I    | 16.11 m <sup>2</sup> |
| 7  | bathroom I   | 3.73 m <sup>2</sup>  |
| 8  | cloakroom II | 3.66 m <sup>2</sup>  |
| 9  | bedroom II   | 14.92 m <sup>2</sup> |
| 10 | bathroom II  | 3.42 m <sup>2</sup>  |
| 11 | corridor     | 4.3 m <sup>2</sup>   |
| 12 | bedroom III  | 20.17 m <sup>2</sup> |
| 13 | bathroom III | 6.28 m <sup>2</sup>  |

|                 |                       |
|-----------------|-----------------------|
| Total apartment | 144.34 m <sup>2</sup> |
| 14 terrace I    | 26.94 m <sup>2</sup>  |

Total 171.28 m<sup>2</sup>

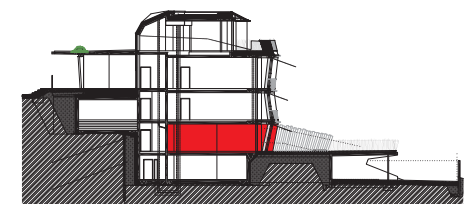
|                |                      |
|----------------|----------------------|
| 15 terrace II  | 27.62 m <sup>2</sup> |
| 16 green       | 130 m <sup>2</sup>   |
| 17 storage     | 16 m <sup>2</sup>    |
| parking places | 2 pcs                |



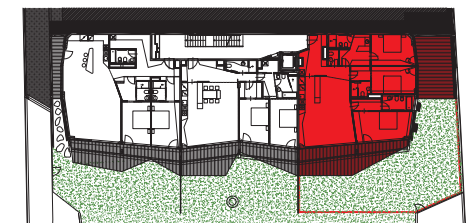
0 1 5 10 m

All stated floor areas are approximate and subject to normal construction variances and tolerances. Fit-out of the apartment shown on floor plan (such as furniture, kitchen including appliances, build in wardrobes, etc.) is for presentation purposes only, not included in the price of apartment.

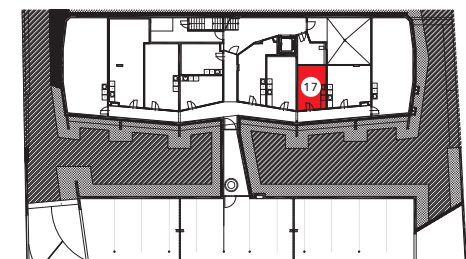
Green - the exclusive right of use to adjacent apartment owner.



cross section



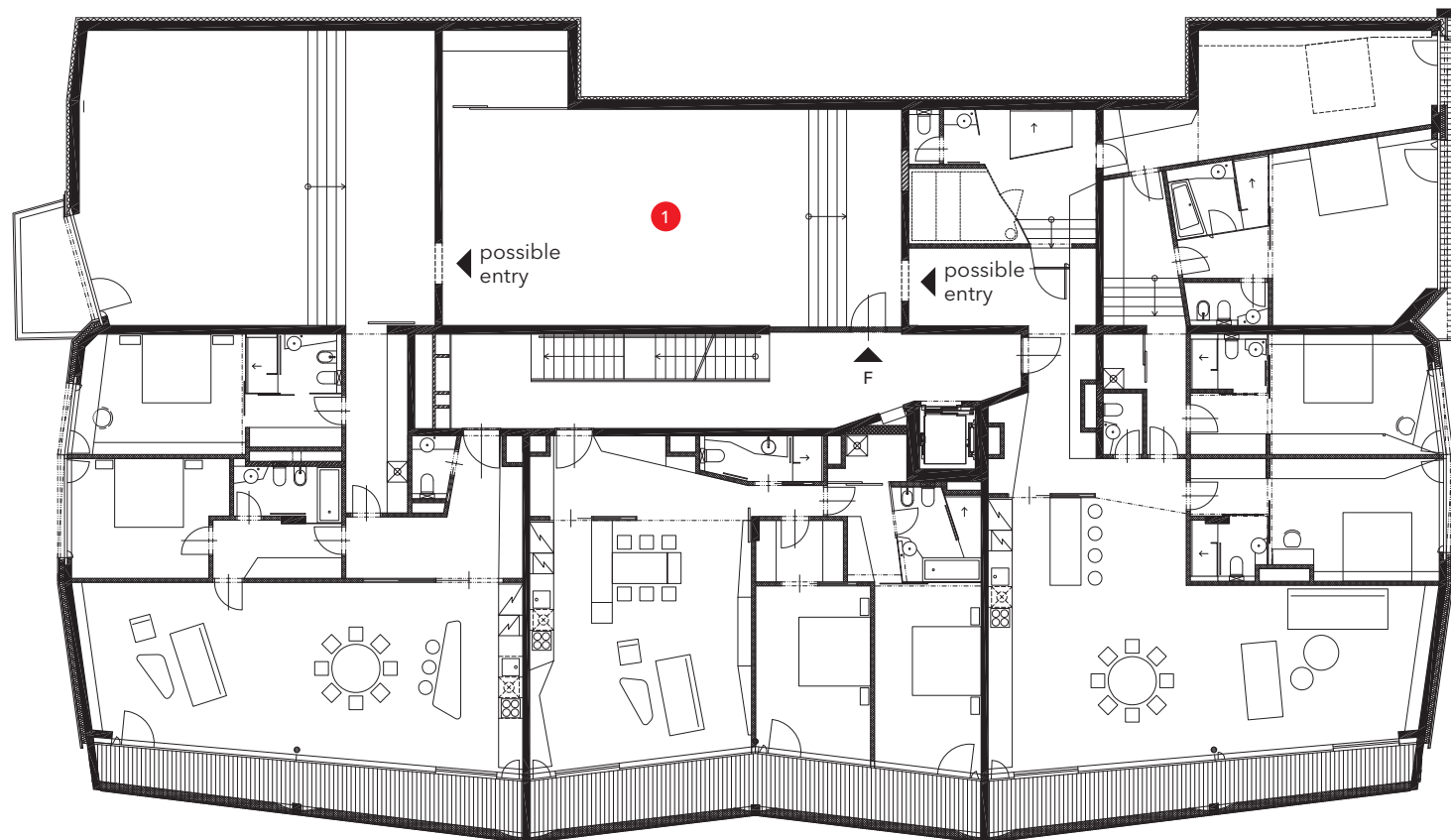
ground floor



basement storage



RESIDENCE  
PUŠKINOVA



1<sup>st</sup> floor

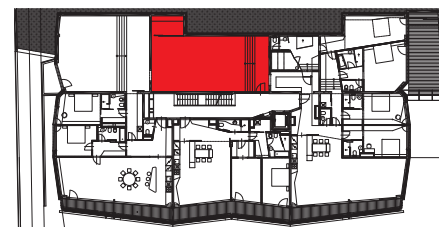
0 1 5 10 m

## MULTIPURPOSE SPACE

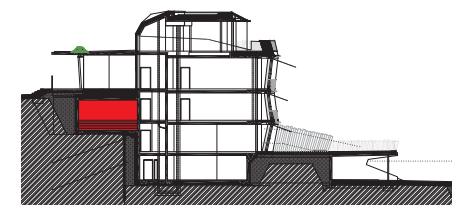
1<sup>st</sup> floor

1 vacant room / fitness 92 m<sup>2</sup>

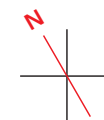
Can be fitted as wellness, fitness, wine cellar etc. Possibility of direct connection with apartment no. 5 and 7 or can be used as separate unit.



1<sup>st</sup> floor



cross section





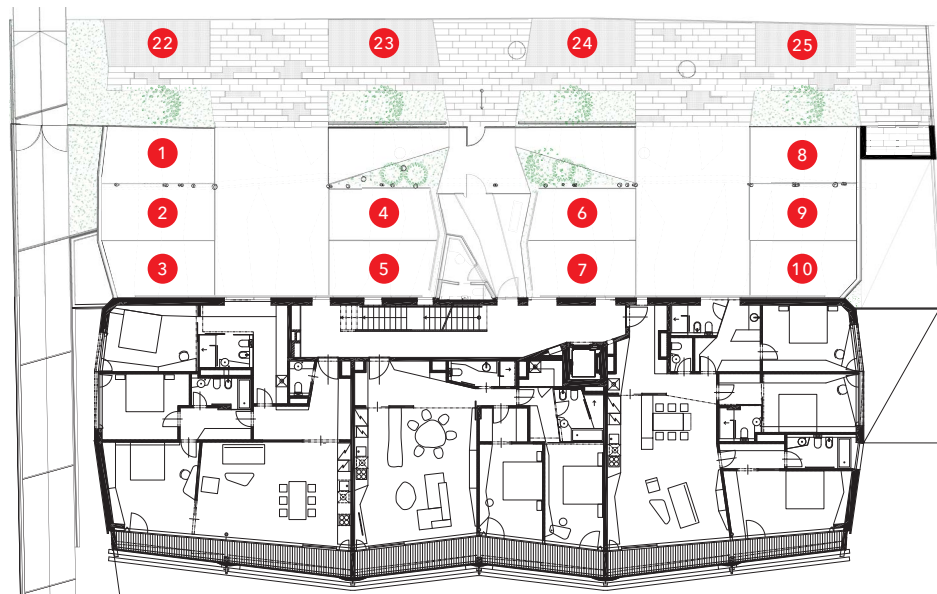
RESIDENCE  
PUŠKINOVA

## PARKING

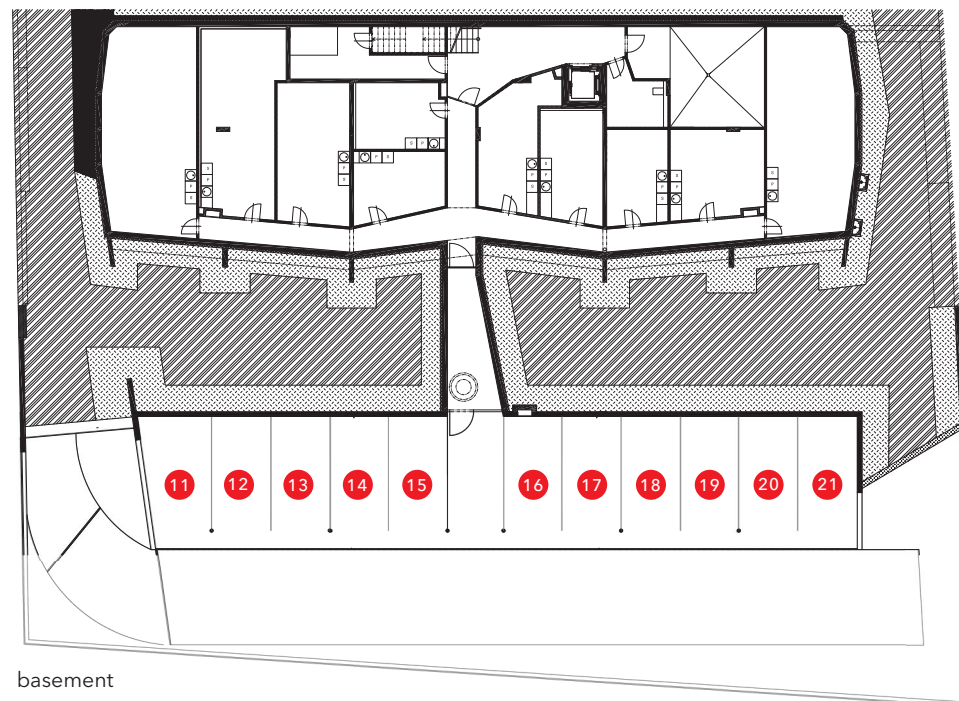
2<sup>nd</sup> floor / basement

|    |               |     |
|----|---------------|-----|
| 1  | parking place | S1  |
| 2  | parking place | S8  |
| 3  | parking place | S2  |
| 4  | parking place | S5  |
| 5  | parking place | S5  |
| 6  | parking place | S7  |
| 7  | parking place | S7  |
| 8  | parking place | S1  |
| 9  | parking place | S10 |
| 10 | parking place | S4  |
| 11 | parking place | S2  |
| 12 | parking place | S3  |
| 13 | parking place | S4  |
| 14 | parking place | S5  |
| 15 | parking place | S1  |
| 16 | parking place | S1  |
| 17 | parking place | S6  |
| 18 | parking place | S7  |
| 19 | parking place | S8  |
| 20 | parking place | S9  |
| 21 | parking place | S10 |

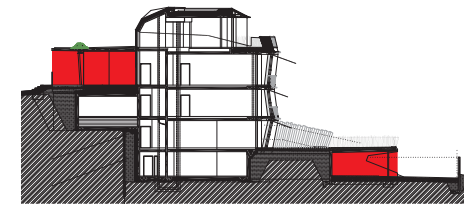
|    |          |
|----|----------|
| 22 | visitors |
| 23 | visitors |
| 24 | visitors |
| 25 | visitors |



2<sup>nd</sup> floor



basement



cross section

All stated floor areas are approximate and subject to normal construction variances and tolerances. Fit-out of the apartment shown on floor plan (such as furniture, kitchen including appliances, build in wardrobes, etc.) is for presentation purposes only, not included in the price of apartment.

0 1 5 10 m

